

Quick Start Guide

35mm/APS(IX240) Film Scanner

SUPER COOLSCAN 5000 ED COOLSCAN V ED

If you need help:

- Visit <http://www.nikontechusa.com/> or call 1-800-NikonUX (for users in the U.S.A.)
- Visit <http://www.europe-nikon.com/support> (for users in Europe)
- Visit <http://www.nikon-asia.com/> (for users in Asia, Oceania, the Middle East, and Africa)

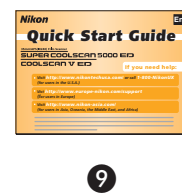
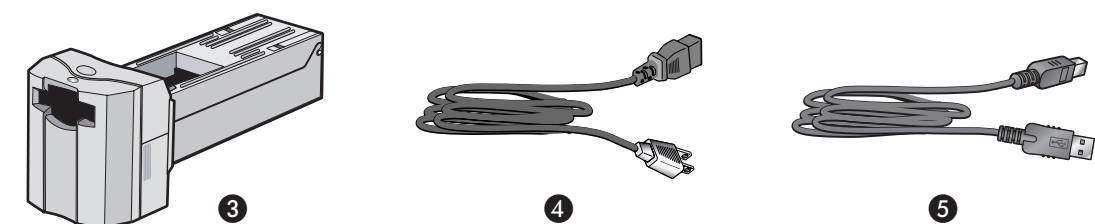
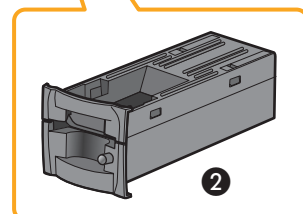
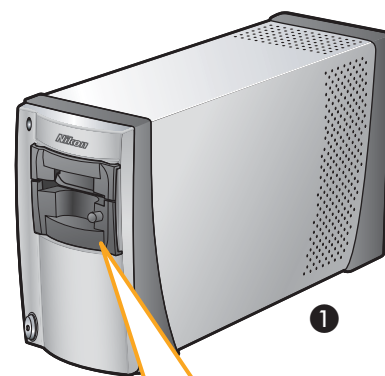
Visit these sites to keep up-to-date with the latest product information, tips, answers to frequently-asked questions (FAQs), and general advice on digital imaging and photography.

Preparation

Step 1 Check the package contents

Remove the scanner from the box and confirm that you have all the items listed below.

- 1 SUPER COOLSCAN 5000 ED or COOLSCAN V ED film scanner
- 2 MA-21 slide-mount adapter
- 3 SA-21 strip-film adapter
- 4 Power cable
- 5 USB cable
- 6 CD-ROM
 - Nikon Scan CD (Yellow)
 - Nikon Scan Reference Manual / Easy Scanning Guide CD
 - Nikon View CD (Yellow)
 - Nikon View Reference Manual CD
- 7 Warranty
- 8 User's Manual
- 9 Quick Start Guide (this guide)



Step 2 Install Nikon Scan

Before connecting the scanner, install Nikon Scan as described below.

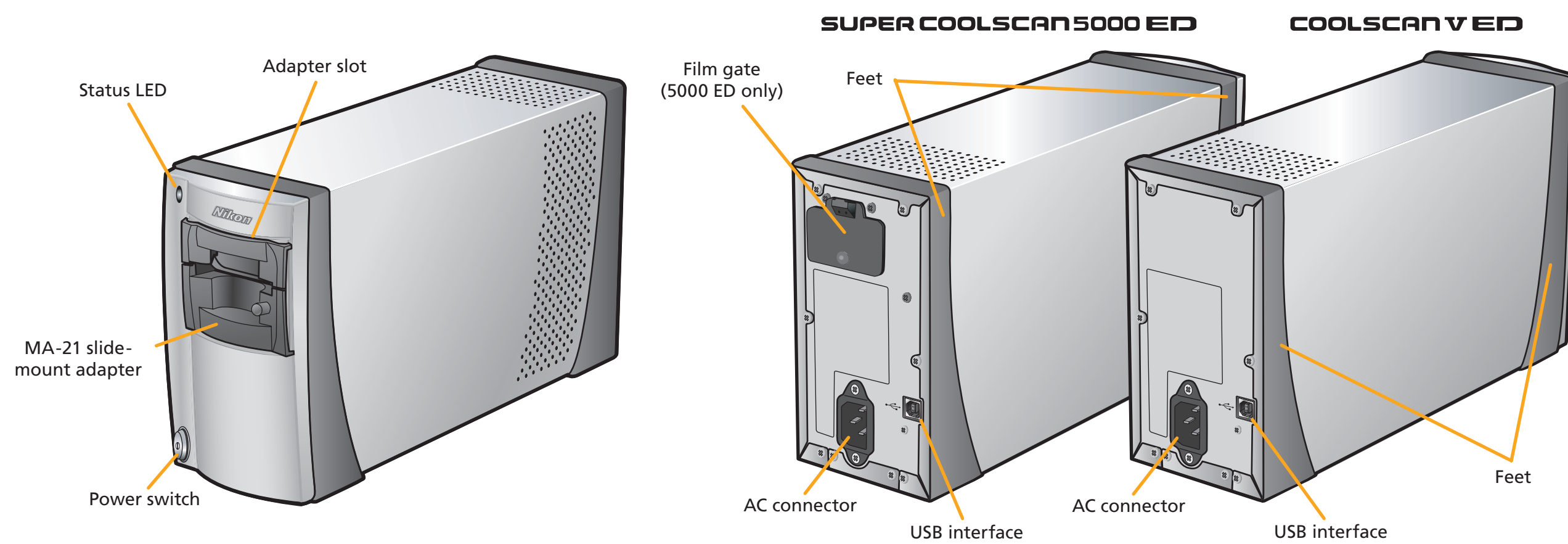
Supported operating systems

- | | |
|-----------|--|
| Windows | <ul style="list-style-type: none"> • Windows XP Home Edition/Professional • Windows 2000 Professional • Windows Millennium Edition (Me) • Windows 98 Second Edition (SE) |
| Macintosh | <ul style="list-style-type: none"> • Mac OS X (version 10.1.5 or later) • Mac OS 9 (version 9.1 or later) |

Other system requirements are detailed on page 10 (Windows), 15 (Macintosh) of the User's Manual.

Continued above at right

Parts of the Scanner



Windows

a Turn the computer on and wait for Windows to start up. Do not connect the scanner.

Windows XP Home Edition / Windows XP Professional / Windows 2000 Professional
When installing or uninstalling Nikon Scan, log in as the "Computer administrator" (Windows XP Home Edition/Windows XP Professional) or "Administrator" (Windows 2000 Professional).

Earlier Versions of Nikon Scan
Before installing Nikon Scan 4, uninstall any earlier versions of Nikon Scan. See "Uninstalling Nikon Scan" on pages 62-64 of the User's Manual.

b Insert the Nikon Scan CD in the CD-ROM drive. After a brief pause, a language selection dialog will be displayed. Select a language and click **Next**.

c The "Install Center" dialog will be displayed. Click the "Software" tab and click **Install**.

d The opening dialog of the Nikon Scan installer will be displayed. Click **Next**.

e After reading the license agreement, click **Yes** to accept the agreement and proceed with installation.

f The default install location for Nikon Scan (C:\Program Files\Nikon\Nkscan4) is displayed under "Destination location." To choose a different location, click **Browse...** and navigate to the desired folder. Click **Next** to begin installation.

The dialog shown at right will be displayed. Click **Yes** to create the destination folder for Nikon Scan.

g When prompted to select the scanner drivers, confirm that LS-40/50/5000 is selected and click **Next**.

Windows 2000 Professional
The dialog shown at right will be displayed; click **Yes** (if the dialog is displayed twice, click **Yes** each time).

h Click **Yes** to create a shortcut to Nikon Scan on the desktop.

Associating Image Enhancement Extensions with Nikon Scan
If Nikon Capture or other Nikon software is already installed on the computer, a dialog will be displayed requesting permission to associate image enhancement settings file extensions with Nikon Scan. Click **Yes**.

Continued above at right

i The opening dialog of the color space selection wizard will be displayed. Click **Use Wizard**.

j Click **Windows**.

k A list of color-space profiles will be displayed. Select **sRGB** (recommended) and click **OK**. For more information on color-space profiles, see page 88 of the Nikon Scan Reference Manual (on CD).

Windows 98 SE
If the computer displays a message stating that an IEEE 1394 update is required, click **OK**.

l Click **Finish** to exit the Nikon Scan installer.

m Click **Yes** to restart the computer.

Macintosh

a Turn on the computer and wait for it to start up. Do not connect the scanner.

Mac OS X
Administrator privileges are required to install or uninstall Nikon Scan.

Mac OS 9
CarbonLib 1.5 or later is required to install Nikon Scan 4. If the installer detects an earlier version, a message will be displayed. Click **Install** to upgrade to a new version of CarbonLib. Be sure to restart the computer before continuing the installation.

b Insert the Nikon Scan 4 CD in the CD-ROM drive. Double-click the Welcome icon (W) in the root directory of the Nikon Scan 4 CD.

c A language selection dialog will be displayed. Select a language and click **Next**.

d The "Install Center" dialog will be displayed. Click the "Software" tab and click **Easy Install**.

Mac OS X
Clicking **Install** displays the "Authenticate" dialog shown at right. Enter the administrator name and password and click **OK**.

e After reading the license agreement, click **Accept** to accept the agreement and view the ReadMe file. Take a few moments to read this file, which may contain important information that could not be included in the product manuals. Click **Continue...** to proceed to the next step.

f Click **Install** to begin installation. Nikon Scan 4 will be installed to the folder shown under "Install Location." In Mac OS X, Nikon Scan 4 is installed to the "Applications:Nikon Software" folder on the start-up disk. The default install location for Mac OS 9 is the "Applications (Mac OS 9):Nikon Software" folder on the OS 9 start-up disk.

If Multiple Copies of Photoshop Are Installed (Mac OS 9 Only)
If a copy of the Nikon Scan plug-in is installed in the plug-ins folders for supported versions of Adobe Photoshop, Photoshop can be used to acquire images directly from the scanner. If more than one copy of Photoshop is installed on the computer, a list of plug-ins folders will be displayed. Select the plug-ins folders for the copies of Photoshop that will be used to acquire images and click **Continue** to copy the Nikon Scan plug-in to the selected folders.

g The opening dialog of the color space selection wizard will be displayed. Click **Use Wizard**.

h Click **Macintosh**.

i A list of color-space profiles will be displayed. Select **Apple RGB** (recommended) and click **OK**. For more information on color-space profiles, see page 90 of the Nikon Scan Reference Manual (on CD).

j Click **Yes** to add Nikon Scan 4 to the Dock (Mac OS X) or create an alias of Nikon Scan 4 on the desktop (Mac OS 9).

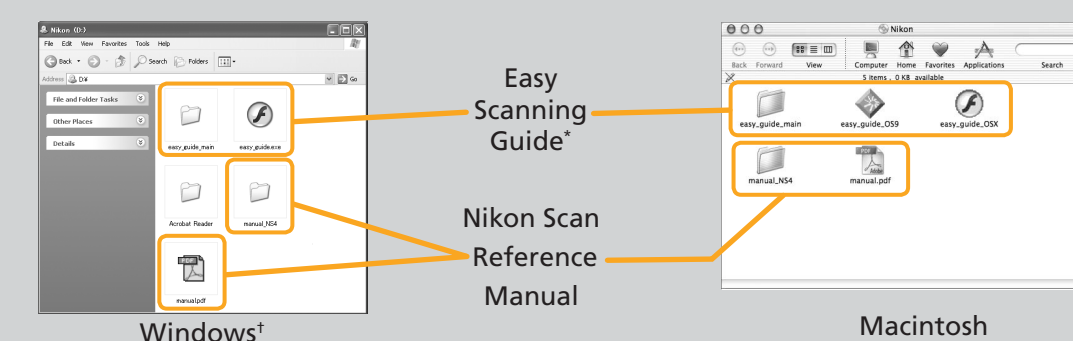
k Click **Quit** to exit the installer.

l Click **Restart** to restart the computer.

See Other Side

Nikon Scan Reference Manual / Easy Scanning Guide CD

This CD contains the Nikon Scan Reference Manual, which provides complete information on Nikon Scan, and the Easy Scanning Guide, an animated guide introducing such basic scanning tasks as setting image size and resolution.



Viewing the Nikon Scan Reference Manual
Double-click the **manual.pdf** icon on the reference manual CD. Adobe Acrobat Reader will start and a language selection screen will be displayed; click the appropriate link to view the manual in the desired language. Note that Adobe Acrobat Reader 4 or later is required to view the Reference Manual; Windows users can install Acrobat Reader 5 from the "Acrobat Reader" folder on the reference manual CD.

Viewing the Easy Scanning Guide
Double-click the **easy_guide.exe** icon (Windows), **easy_guide_OSX** icon (Mac OS X), or **easy_guide_OS9** icon (Mac OS 9). The Macromedia Flash Player will start and a language selection screen will be displayed; click the appropriate link to view the guide in the desired language. The Easy Scanning Guide can also be copied to the computer hard disk for ease of reference. Copy the "easy_guide_main" folder and **easy_guide.exe** (Windows), **easy_guide_OSX** (Mac OS X), or **easy_guide_OS9** (Mac OS 9) to the desktop.

* Users of Mac OS X should ensure that the start-up disk is named using only letters and numbers (the default name for the start-up drive is "Macintosh HD"). The guide may not start if the volume name contains punctuation or other non-alphanumeric characters.

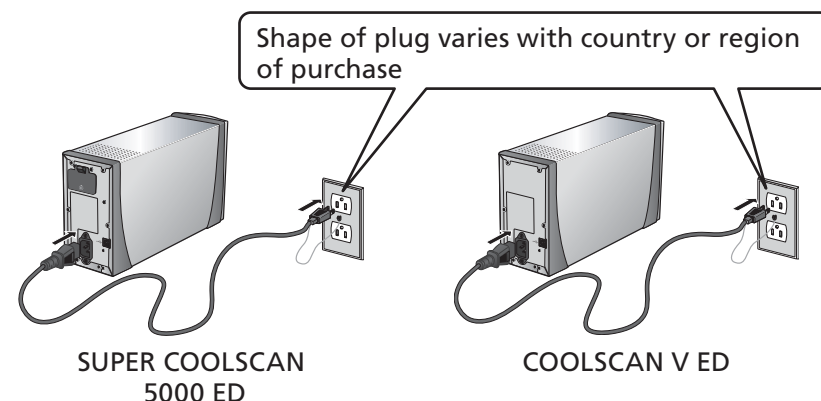
Continued above at right

Scanning

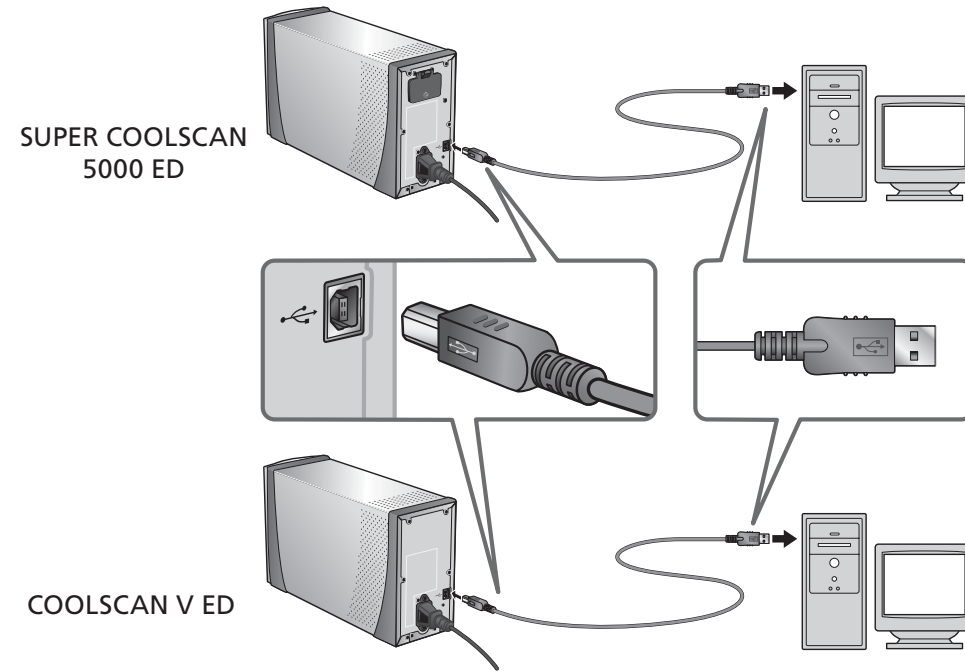
This side of the guide describes how to connect the scanner to the computer and scan images using Nikon Scan. Be sure to complete the steps on the other side of this guide before proceeding.

Step 3 Connect the scanner

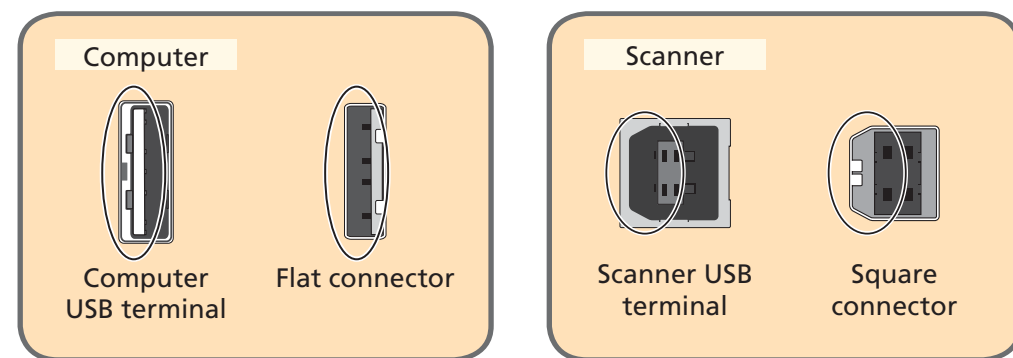
a After confirming that the power switch is in the off position, connect the power cable as shown and plug the scanner into a general-purpose household outlet.



b Connect the USB cable as shown.



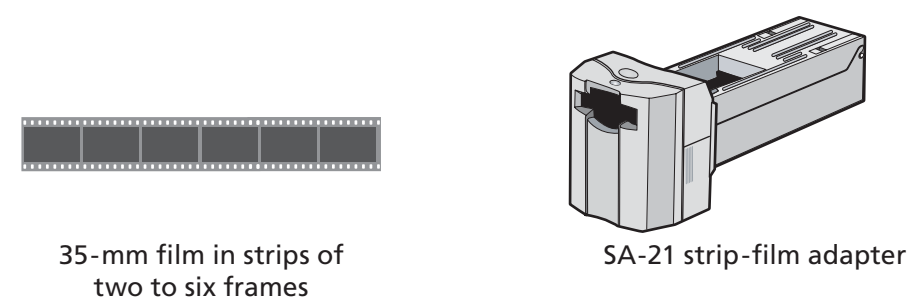
Connect the flat connector to the computer and the square connector to the scanner. Align the connectors to match the areas circled in the illustration below. Using the wrong connector or attempting to insert the connectors in another orientation could not only damage the connector, but also the scanner or computer.



USB 2.0
For information on USB 2.0, see page 22 of the *User's Manual*.

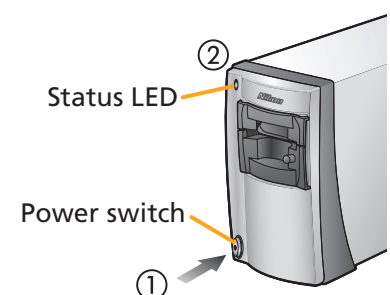
Step 4 Ready film

The type of film that can be scanned depends on the adapter used. This guide describes how to scan strips of 35-mm film using the SA-21 strip-film adapter. The SA-21 can be used to scan developed 35-mm film in strips of two to six frames. An MA-21 slide-mount adapter is also provided for scanning 35-mm slides. See the *User's Manual* for details.

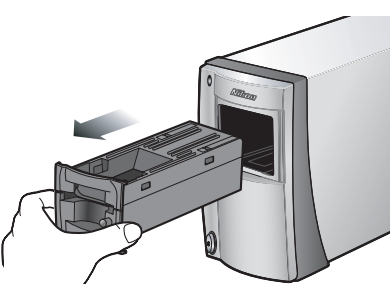


Step 5 Insert the adapter

a After making sure that the computer is running, turn the scanner on ①. The status LED will blink ②. Wait until the status LED glows steadily.

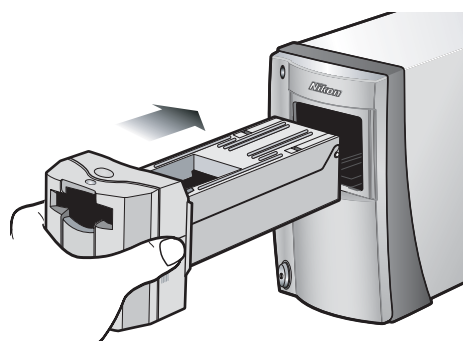


b Remove the MA-21.

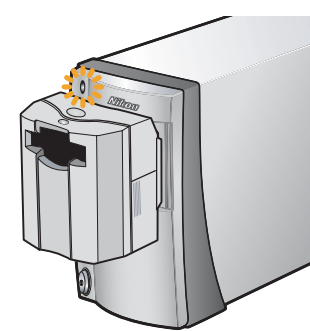


Continued above at right

c Slide the SA-21 into the adapter slot.



d When the adapter is fully inserted, the status LED will blink while the scanner is calibrated. Wait for the status LED to glow steadily.

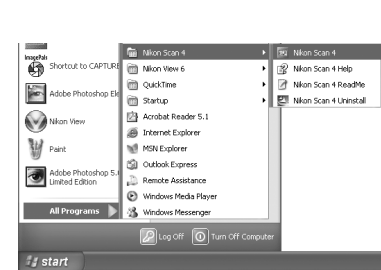


Windows 2000 Professional
A "Digital Signature Not Found" dialog will be displayed the first time the scanner is connected and turned on. Click **Yes** to register the scanner with Windows.

Step 6 Start Nikon Scan

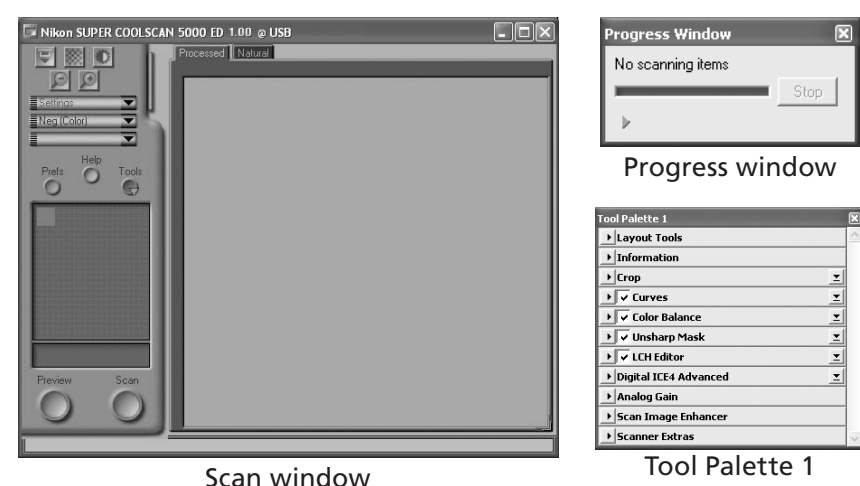
Windows
If a shortcut was created at installation, double-click the shortcut (shown) created on the desktop.

Nikon Scan can also be started by clicking the **Start** button and selecting **Nikon Scan 4 > Nikon Scan 4** from the **Programs** menu.



Macintosh
Nikon Scan can be started by clicking the **Nikon Scan** icon (shown) in the Dock (Mac OS X) or double-clicking the **Nikon Scan** alias (shown) on the desktop (Mac OS 9). Note that these options are only available if Nikon Scan was added to the Dock or an alias was created during installation.

Nikon Scan can also be started by locating the folder in which Nikon Scan was installed and opening the **Nikon Software:Nikon Scan 4** folder. Double-click the **Nikon Scan 4** icon (shown). Under Mac OS X, the "Nikon Software" folder will be in the "Applications" folder on the start-up disk. Under Mac OS 9, the default install location is in the "Applications (Mac OS 9)" folder on the start-up disk. The scan window will open.



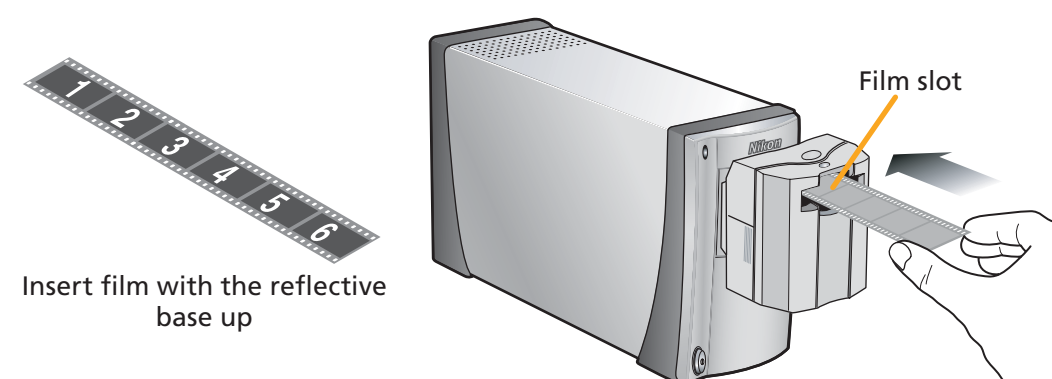
Mac OS 9
Before using Nikon Scan under Mac OS 9, be sure to read the section on recommended memory allocations on page 139 of the *Nikon Scan Reference Manual* (on CD).

Temporary Storage (Windows Only)
A message may be displayed stating that the folder selected for temporary storage is not available. Click **OK** to use the default folder.

Step 7 Insert film

a Hold the edges of the film lightly between thumb and forefinger with the reflective base up and the matte emulsion surface down.

b Insert the film in the adapter film slot. The film will be fed into the adapter automatically after being inserted a short distance.

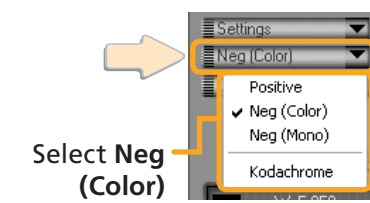


Release the film when the feed mechanism activates. Do not pull or push on the film or otherwise interfere with the feed mechanism.

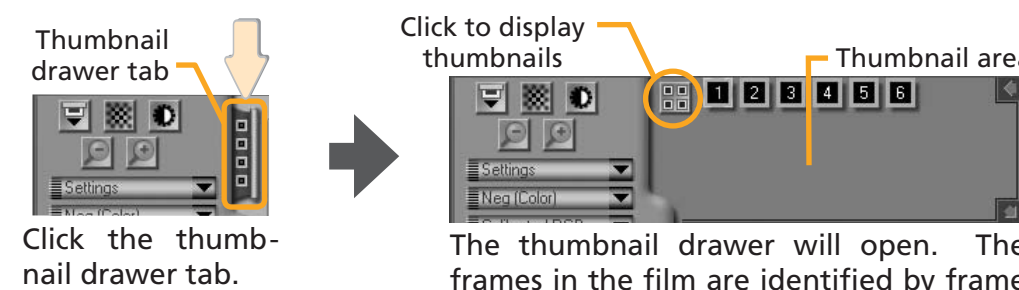
Continued above at right

Step 8 Scan

a Click the film-type menu and choose a film type that matches the film being scanned. To scan color negatives, select **Neg (Color)**.



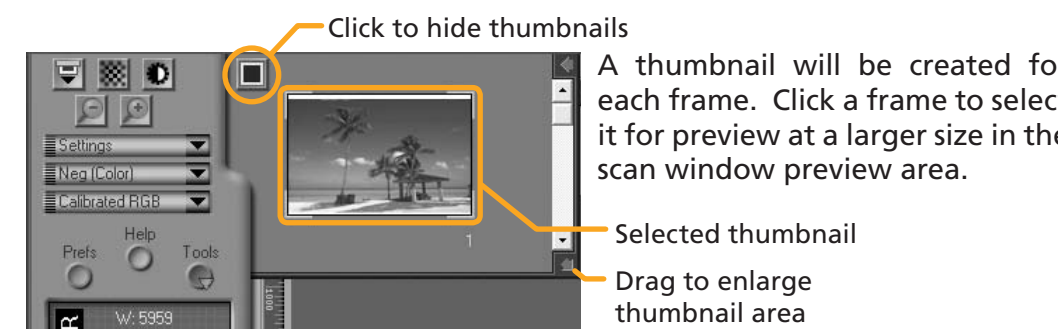
b Select the frames to be scanned.



Click the thumbnail drawer tab.

Click to display thumbnails

The thumbnail drawer will open. The frames in the film are identified by frame number. To view each frame as a small "thumbnail" preview, click the [Thumbnail] button.



Click to hide thumbnails

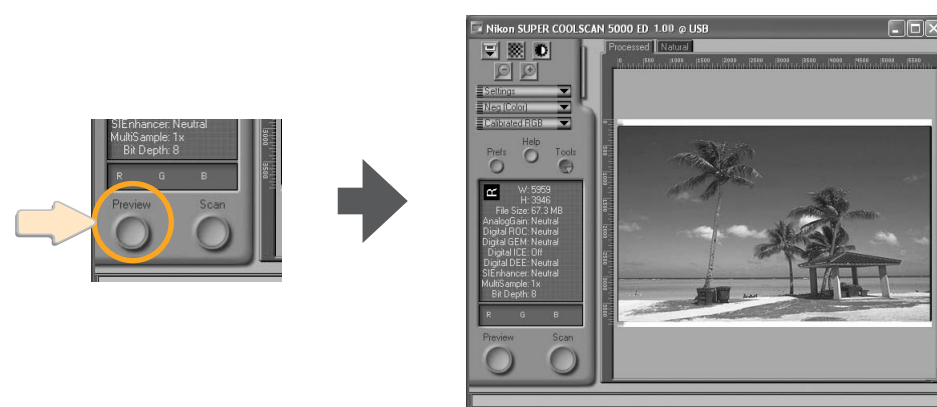
A thumbnail will be created for each frame. Click a frame to select it for preview at a larger size in the scan window preview area.

Selected thumbnail

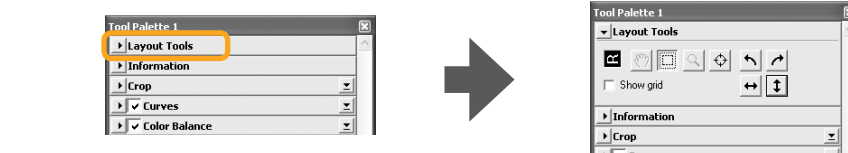
Drag to enlarge thumbnail area

The Progress Window
The "Progress" window shows the progress of preview and scan operations. Click **Stop** to cancel the current operation.

c Click the **Preview** button to preview the selected frame in the preview area.

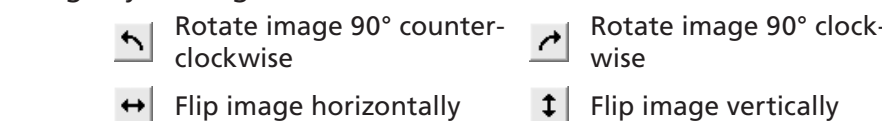


d Click the triangle next to the "Layout Tools" palette in Tool Palette 1. The "Layout Tools" palette will be displayed.

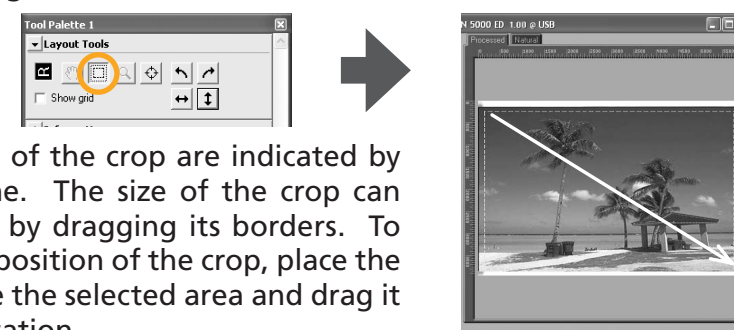


The "Layout Tools" palette can be used to:

- **Rotate or flip the image in the preview area**
If the preview image is not in the desired orientation, rotate or flip the image by clicking the [Rotate 90° counter-clockwise], [Rotate 90° clockwise], [Flip image horizontally], or [Flip image vertically] button.



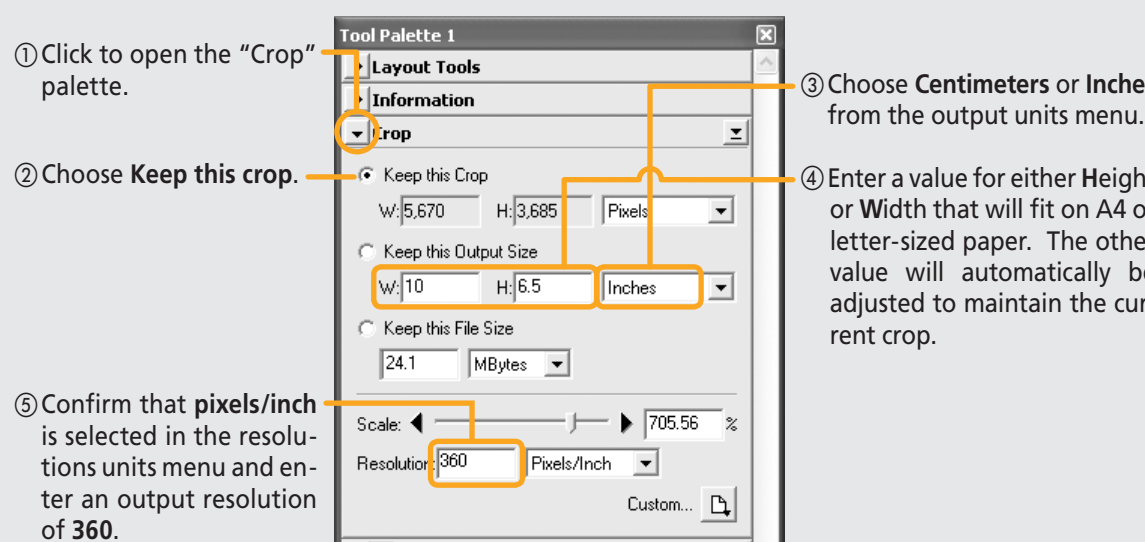
- **Select the area to be scanned**
To select the portion of the image that will be scanned (called the "crop"), click the **Crop Tool** (shown) in the "Layout Tools" palette and drag the mouse over the image.



For information on the other image enhancement tools in Tool Palette 1, see pages 30–76 of the *Nikon Scan Reference Manual* (on CD).

Tip: Specifying Output Size and Resolution

When an image is displayed in the preview area, the "Crop" palette in Tool Palette 1 can be used to specify the size and resolution at which the image will be scanned (for details, see pages 36–40 of the *Nikon Scan Reference Manual* / *Easy Scanning Guide CD*). For example, to scan an image so that it can be printed within the margins of A4 (21.0 × 29.7 cm) or letter-sized (8.5" × 11") paper using a typical inkjet printer, adjust settings as follows: printing:



① Click to open the "Crop" palette.

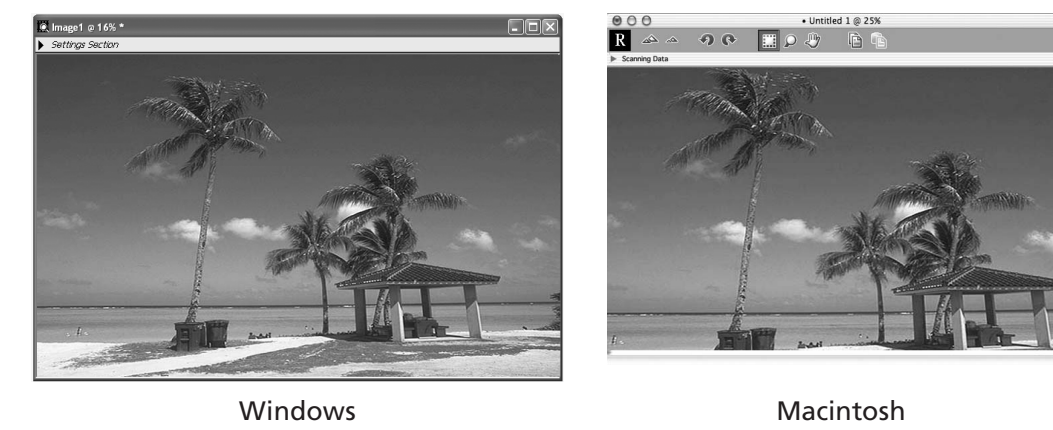
② Choose **Keep this crop**.

③ Choose **Centimeters or Inches** from the output units menu.

④ Enter a value for either **Height or Width** that will fit on A4 or letter-sized paper. The other value will automatically be adjusted to maintain the current crop.

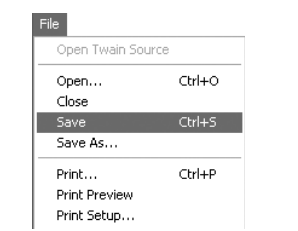
⑤ Confirm that **pixels/inch** is selected in the resolutions units menu and enter an output resolution of 360.

e Click the **Scan** button to scan the image. When scanning is complete, the image will be opened in an image window. The image in the image window will reflect any rotations, flips, and other modifications made in the scan window.



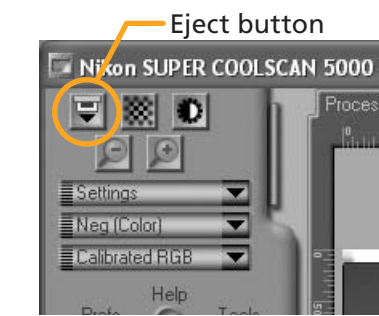
Note
The scan window may remain open "on top" of the image window. Drag the scan window to move it out of the way of the image window.

f To save the image, select **Save** from the **File** menu. A "Save As" dialog will be displayed; navigate to the desired location, choose a name and file type, and click **Save**.



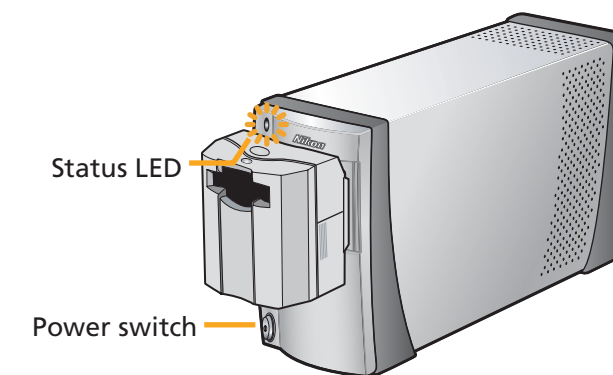
Step 9 Eject the film and turn the scanner off

a Click the **Eject** button in the scan window to eject the film from the SA-21 (for more information on ejecting film from other adapters, see the *User's Manual*).



b Select **Exit (Windows)** or **Quit (Mac OS 9)** from the **File** menu. In Mac OS X, select **Quit Nikon Scan 4** from the **Nikon Scan 4** menu.

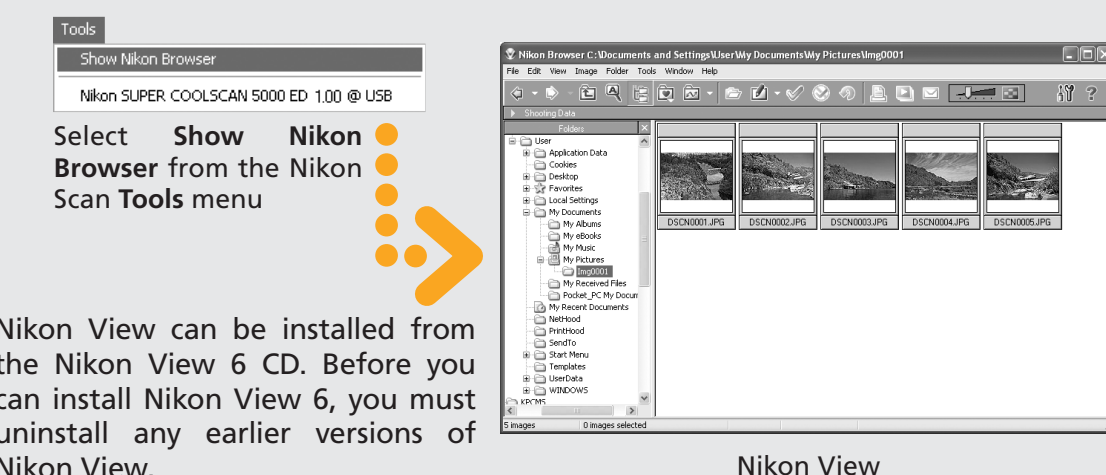
c After checking that the scanner status LED is not blinking, press the power switch to turn the scanner off.



When the Scanner Is Not in Use
To prevent dust from accumulating inside the scanner, leave the SA-21 or MA-21 in the adapter slot when the scanner is not in use.

Nikon View (Nikon View 6 or later)

If Nikon View is installed on the computer, selecting **Show Nikon Browser** from the **Nikon Scan Tools** menu will start the Nikon Browser component of Nikon View. Nikon View can be used to view scanned images either as thumbnails or at full size and to edit and print images after scanning. For more information, see the *Nikon View Reference Manual* (available in pdf format on the Nikon View Reference manual CD) or Nikon View's on-line help.



Nikon View can be installed from the Nikon View 6 CD. Before you can install Nikon View 6, you must uninstall any earlier versions of Nikon View.

Note
To register your copy of Nikon View, open the "Product Registration" panel in the "Install Center" window and click the **Product Registration** button (Internet connection required).

* Not available in some areas.